

# Climate Resilience! Printable Pages

- Resilience planner
- Climate Challenge Research Organizer
- Resilient Food System Game Cards
- Collaborative Water Management Challenge Role Cards
- Structure Assessment Rubric
- Box model

# Resilience Planner

| Context | Challenges | Vulnerabilities | Responses | Potential Outcomes |
|---------|------------|-----------------|-----------|--------------------|
|         |            |                 |           | Transform          |
|         |            |                 |           | Recover Better     |
|         |            |                 |           | Recover            |
|         |            |                 |           | Recover Worse      |
|         |            |                 |           | Collpase           |



# Climate Challenge Research Organizer

|            |          |               |
|------------|----------|---------------|
| Background | Social   | Environmental |
|            | Economic | Ethical       |

# Resilient Food System Game Cards

Connecting parts of a food system cards (print on white paper)

|                       |                       |                       |                       |                       |
|-----------------------|-----------------------|-----------------------|-----------------------|-----------------------|
| 1<br>Access<br>Points | 1<br>Access<br>Points | 1<br>Access<br>Points | 1<br>Access<br>Points | 1<br>Access<br>Points |
| 2<br>Warehouses       | 2<br>Warehouses       | 2<br>Warehouses       | 2<br>Warehouses       | 2<br>Warehouses       |
| 3<br>Distributors     | 3<br>Distributors     | Transport             | Transport             | Transport             |
| Transport             | Transport             | Transport             | Transport             | Transport             |
| Transport             | Transport             |                       |                       |                       |

# Resilient Food System Game Cards

Food supply cards Option 1: print on colored paper or color after printing)

|                                 |                                  |                                 |                                 |
|---------------------------------|----------------------------------|---------------------------------|---------------------------------|
| Consumer                        | 1<br>Emergency<br>Food<br>Supply | 2<br>Local<br>Food<br>Supply    | 2<br>Local<br>Food<br>Supply    |
| 2<br>Local<br>Food<br>Supply    | 2<br>Local<br>Food<br>Supply     | 3<br>Regional<br>Food<br>Supply | 3<br>Regional<br>Food<br>Supply |
| 3<br>Regional<br>Food<br>Supply | 4<br>Global<br>Food<br>Supply    | 4<br>Global<br>Food<br>Supply   |                                 |

# Resilient Food System Game Cards

Food supply cards Option 2: (print on white paper)

|                                 |                                  |                                 |                                 |
|---------------------------------|----------------------------------|---------------------------------|---------------------------------|
| Consumer                        | 1<br>Emergency<br>Food<br>Supply | 2<br>Local<br>Food<br>Supply    | 2<br>Local<br>Food<br>Supply    |
| 2<br>Local<br>Food<br>Supply    | 2<br>Local<br>Food<br>Supply     | 3<br>Regional<br>Food<br>Supply | 3<br>Regional<br>Food<br>Supply |
| 3<br>Regional<br>Food<br>Supply | 4<br>Global<br>Food<br>Supply    | 4<br>Global<br>Food<br>Supply   |                                 |

# Resilient Food System Game Cards

## Food System Challenge Cards:

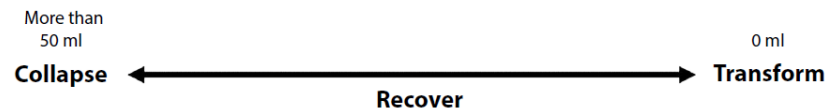
|   |  |
|---|--|
| <p>Challenge 1:</p> <p>An extreme storm means you cannot leave your house for several days. Turn over all your Access Point cards. Do you still have access to a food supply? If so, remove your Emergency Food Supply from the game and continue to Challenge 2.</p> | <p>Challenge 2:</p> <p>Flooding means local shops and markets are closed. Turn over two Access Point cards</p>   |
| <p>Challenge 3:</p> <p>Extreme heat destroys all the crops in your area. Turn over all Local Food Supply cards</p>  | <p>Challenge 4:</p> <p>A wildfire sweeps through your area. Turn over all Local Food Supply cards</p>  |
| <p>Challenge 5:</p> <p>Your region experiences a severe drought. Turn over all Local Food Supply, and Regional Food Supply cards</p>  | <p>Challenge 6:</p> <p>There is a regional storm and no transportation can operate. Turn over any Transport cards that are next to a Regional Food Supply or Warehouse card.</p> |
| <p>Challenge 7:</p> <p>Global transportation links are stopped because of a new disease. Eliminate any Transport cards that are next to a Global Food Supply card</p>   | <p>Challenge 8:</p> <p>Global food shortages related to the changing climate mean countries stop exporting food. Turn over the Global Food Supply card.</p>                      |

# Collaborative Water Management Challenge Role Cards

## ROLE CARD

**Storm water management:** Your role is to manage storm water in this community. If you distribute all the storm water, this community can transform and become more resilient by using storm water to meet other needs. If you do not distribute enough storm water, this community will collapse due to flooding, and your team will lose the challenge. To ensure a positive future, distribute enough water to meet your needs.

Possible Outcomes:





### ROLE CARD

**Surface water management:** Your role is to manage surface water in this community. If you collect too much surface water, this community will collapse due to flooding. If you collect too little surface water, this community will collapse due to a water shortage, and your team will lose the challenge. To ensure a positive future, maintain a suitable water level.

Possible Outcomes:



### ROLE CARD

**Groundwater management:** Your role is to manage the groundwater in this community. If you collect enough water, this community can transform and become more resilient by replenishing the store of water they can rely on during future challenges. If you distribute too much water this community will collapse due to a water shortage and your team will lose the challenge. To ensure a positive future, maintain a suitable water level.

Possible Outcomes:



### ROLE CARD

**Agriculture:** Your role is to manage water that goes to farms and ranches in this community. Farmers and ranchers need water to grow crops and raise animals that feed the community. If you collect enough water, the community can transform by growing excess food to store for emergencies. If you collect too little water the community will collapse due to a shortage of food, and your team will lose the challenge. To ensure a positive future, collect enough water to meet farmers' and ranchers' needs.

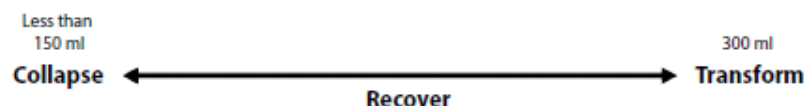
Possible Outcomes:



### ROLE CARD

**Industry:** Your role is to manage water for industrial activities in a community. Industrial activities are processes that turn raw materials into products such as clothing, soap, technology, and other essentials community members need. These processes often use water. If you collect enough water, the community can transform and have the option to make more products, if needed. If you collect too little water, the community will collapse due to a shortage of essential products, and your team will lose the challenge. To ensure a positive future, collect enough water to meet your community's industry needs.

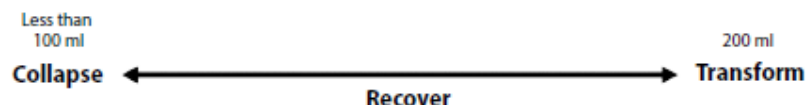
Possible Outcomes:



### ROLE CARD

**Households:** Your role is to manage water for households in this community. Community members use water in their homes for cooking, bathing, washing their clothes, and taking care of pets. If you collect enough water, this community can transform and become more resilient by giving households enough water to share with neighboring communities. If collect too little water, this community will collapse because people cannot cook, clean, or stay hydrated. If this part of the community collapses, your team will lose this challenge. To ensure a positive future, collect enough water to meet your community's household needs.

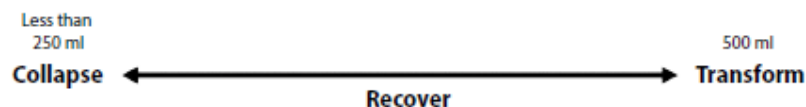
Possible Outcomes:



### ROLE CARDS

**Energy:** Your role is to manage water used for energy in a community. Energy plants use water during the process of generating electricity. This electricity lights homes and powers technology in a community. If you collect enough water, the community can transform by generating clean energy for this community and neighboring communities. If you do not collect enough water the community will collapse, and your team will lose the challenge. To ensure a positive future, collect enough water to meet your community's energy needs.

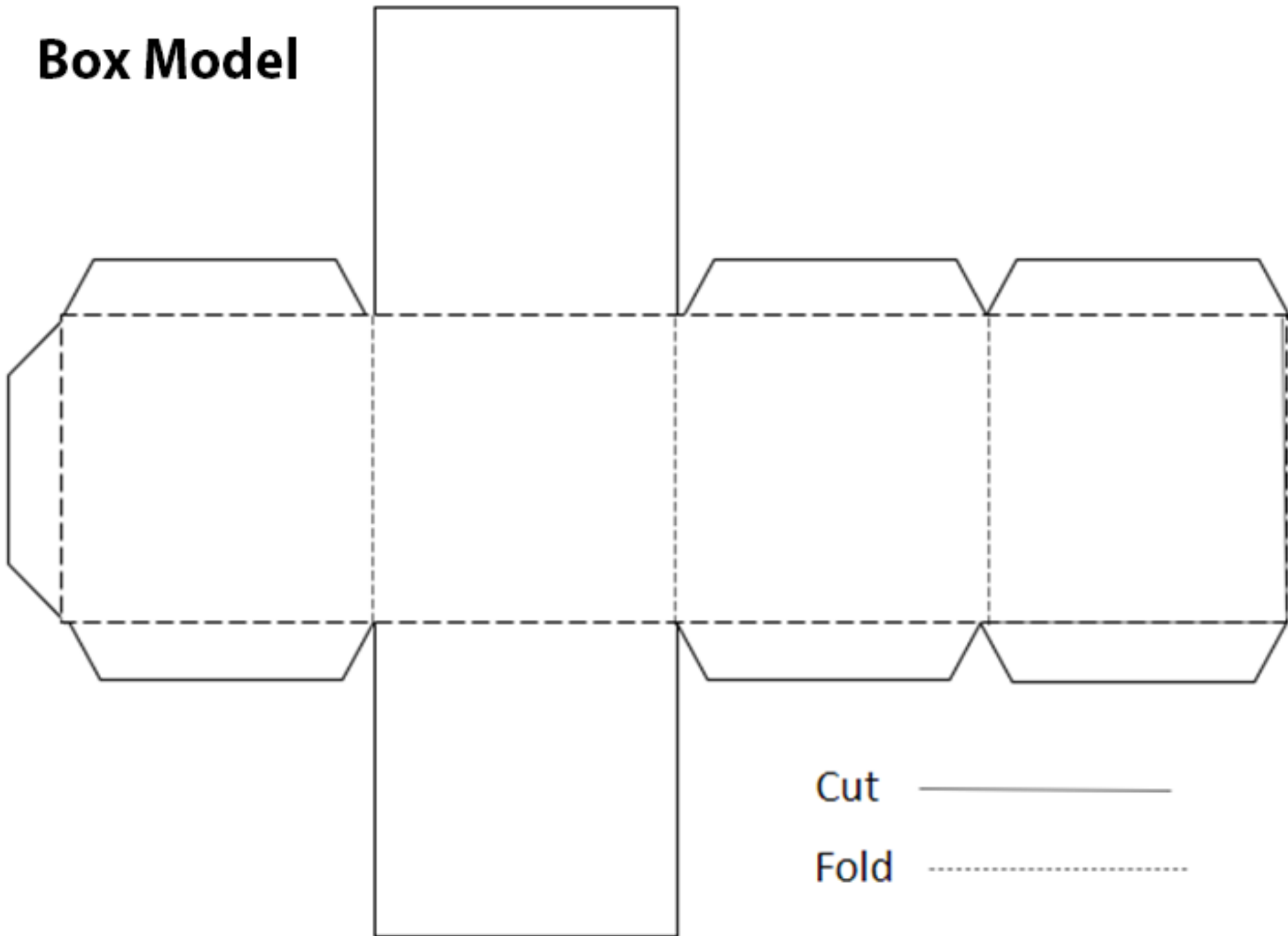
Possible Outcomes:



# Structure Assessment Rubric

|                       | 0 points  | 1 point  | 2 points   |
|-----------------------|---|--|--|
| Climate<br>Resilience | Future climate challenges could greatly impact this structure | Future climate challenges would have little impact on this structure | This structure is already prepared for future climate challenges |
| Social                |   |  |  |
| Environmental         |   |  |  |
| Economic              |   |  |  |
| Ethical               |   |  |  |

# Box Model



Cut —————

Fold - - - - -