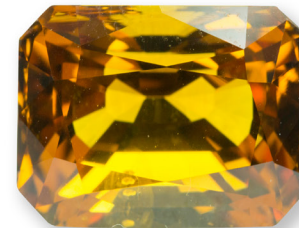
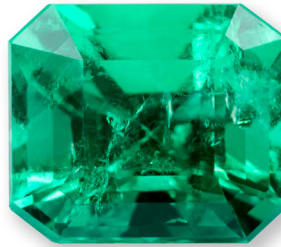


Which material has the best properties for a replica gemstone?



**Hooray! You just made a replica gemstone.
You must now present your evidence
to the museum director.**



Smithsonian
Science Education Center

HOW CAN WE CHANGE SOLIDS AND LIQUIDS?

Museum Presentation

Smithsonian Science for the Classroom™

© Smithsonian Institution

CREDITS: (left) Hannah Osborn, Smithsonian Science Education Center

(right) Christina Zdawczyk, Smithsonian Science Education Center

Your presentation should include:

1. What properties your replica gemstone has.
2. How these properties are the same as a real gemstone.
3. Whether the room needs to be kept hot or cold.



Can We Explain This?



Can We Explain This?



Can We Explain This?

